



UMITO ATAMI THE CLIFF





LOCATION

A resort area just 50 minutes from the city center.
Atami is a historic hot spring area.

On the top floor, enjoy the ocean all to yourself
from the infinity pool that blends into the ocean.
Spend your time looking down at the ocean while relaxing
your tired body from the hustle and bustle of the city.

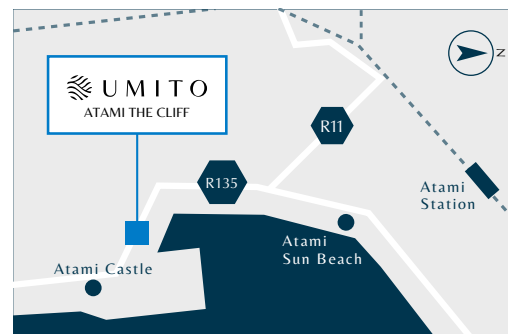
ACCESS

〒413-0023

1992-23, 1992-42, 1694-1 Wadahamaminami,
Atami City, Shizuoka Prefecture, 413-0023

TRAVEL TIME

From Atami Station
Approximately 9 minutes
by car





Welcome to UMITO ATAMI THE CLIFF

We will guide you to UMITO, which has a panoramic view of the ocean in Atami,
which has a nostalgic and relaxing atmosphere.





CONCEPT

A spacious, open living room. Gaze out at the ocean at Atami from the open-air bath, forget the hustle and bustle of the city, and fall asleep to the sound of the waves in the bedroom.

A house with the ocean where you can enjoy Atami's nature to yourself from every room.



RYO TAKARADA

Born in Tokyo in 1971.
Graduated from the Department of Marine Architecture and Engineering, College of Science and Technology, Nihon University. After working at an architectural firm and the design department of a major general contractor, he founded the range design INC. in 2016. He works on architectural and interior design in a wide range of fields, including hotels, inns, apartment complexes, commercial facilities, and offices.
In recent years, he has expanded the scope of his activities to include producing, product design, and the publication of "Actual Measurements of Design Hotels of the World" (Gakugei Publishing), challenging himself to create architecture and spaces that create new lifestyles.



YOSUKE YAMAKAWA

Born in Tokyo in 1991. Graduated from the Department of Architecture at Nihon University's College of Science and Technology.
Joined Saito Corporation in 2014.
Since then, he has been involved in the design and construction of luxury homes, commercial facilities, and apartment buildings. In 2019, he launched the company's design and construction brand "TORYO," aiming to create meticulous and sophisticated products that are consistent from design to construction.



UMITO ATAMI THE CLIFF

It has an area of 111.92 m² and includes two bedrooms and a living room.
You can spend a peaceful time feeling the pleasant presence of nature wherever you are.

Floor plan : 2LDK Indoor area : 111.92 m² Terrace: 18.94 m²



LIVING • DINING

Time passes with the sea of Atami

You can always see the ocean outside the window of your room.

In the spacious living room, you can spend time with your family, friends, or even alone.





BED ROOM

Bedroom in harmony with nature

The two bedrooms are perfect for welcoming guests.

You can enjoy not only the view but also the luxury of being able to feel the ocean and nature as soon as you wake up.





BATH / TERRACE

An open-air bath with a pleasant sea breeze

There is a private open-air bath on the terrace.

The most luxurious time you can spend looking out at the vast ocean while enjoying the scent of the sea breeze.





Image is for illustrative purposes only.

POOL

Spectacular view from the infinity pool

You can have the ocean all to yourself in the common areas and at the infinity pool that blends into the sea. In the summer, you can also see the Atami fireworks festival. You can also enjoy drinks and snacks in the lounge.



SAUNA

Get ready while looking at the ocean

The ultimate sauna experience with a view of the ocean.

A cold bath is also available outside.

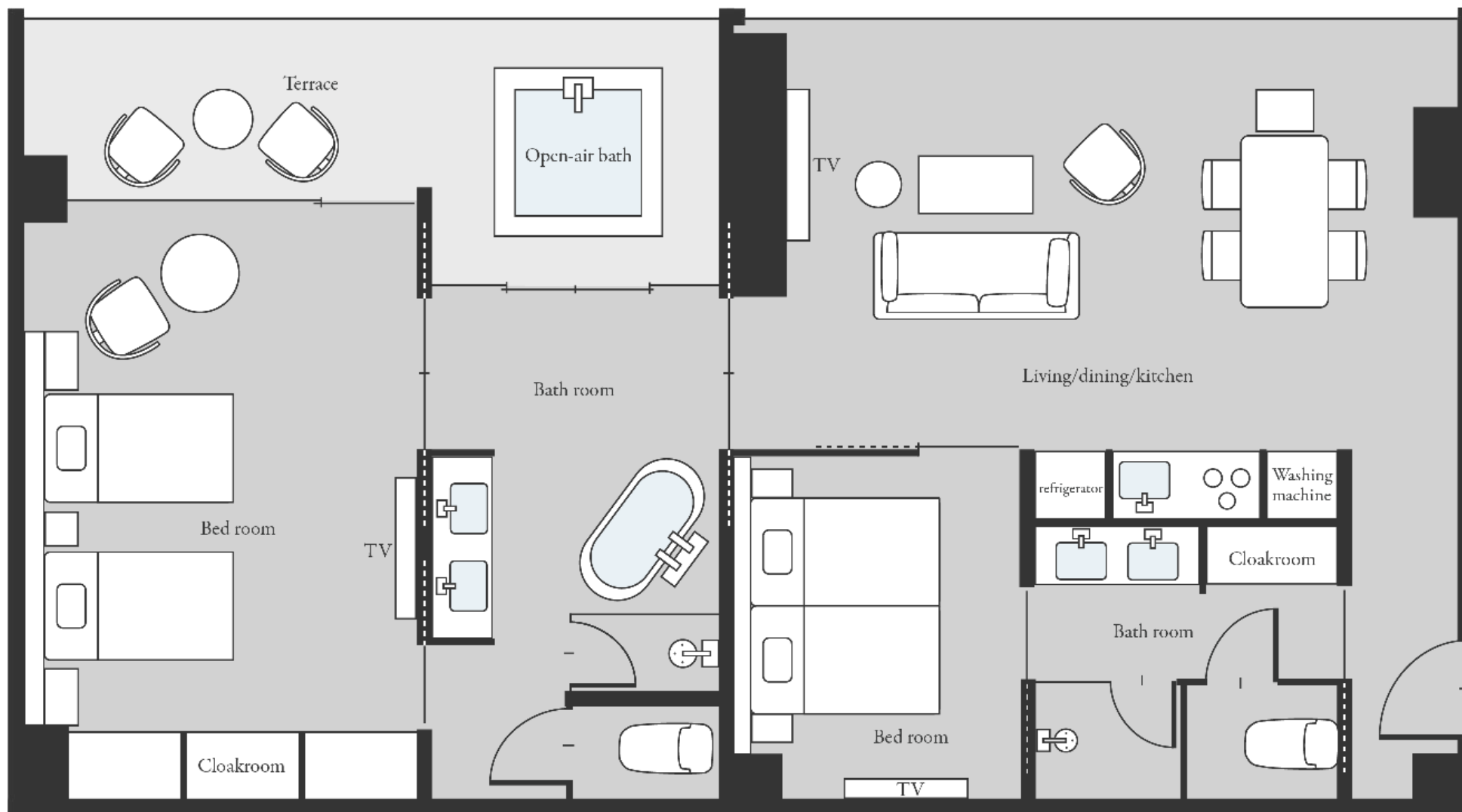


COMMON SPACE

A spacious entrance overlooking Atami from the large windows.
You can spend time in an extraordinary space while gazing at the ocean.
It can also be used as a time to take a break or adjust your daily rhythm.

UMITO ATAMI THE CLIFF

Floor plan : 2LDK Indoor area : 111.92 m² Terrace: 18.94 m²



UMITO ATAMI THE CLIFF is currently in the planning stage. The property design and specifications are subject to change.

A luxurious experience where you can enjoy Atami's sea through food.

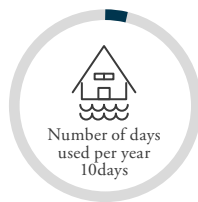


Start a new lifestyle with UMITO

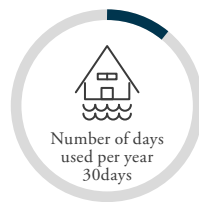
Check out UMITO's features all at once

Purchase as many nights as you want,
starting from 10 nights per year

If you purchase 10 nights per year, you can own the property with only about 1/36 of the ownership.
The offer will end as soon as the ownership is filled.



Share purchase
10.8million



Share purchase
28.8million

Available days

	April to September	October to March
Shared purchase (30nights per year)	15nights	15nights
Shared purchase (10nights per year)	5nights	5nights

Introducing the owner-only system

Stay in the UMITO
you purchased or
another UMITO



You can make reservations for
any date up to 12 months
in advance.

Give a gift to
someone special



Fully supported,
it makes a perfect gift

Any unused units
will be collected.



All you have to do is check
your earnings on the app,
and there's no hassle involved.

Comparison with similar services

	UMITO	Membership resort timeshare	Hotel Condominium	Villa
Buy only what you need	●	●	×	×
Mutual use	●	●	×	×
Monetization through hotel rentals	●	×	●	×

Exclusive benefits for UMITO owners

It is a system that allows UMITO owners to interact within the community to enrich their lives.

BENEFITS 1

Free access to
Akasaka Club Lounge



As an owner benefit, you can use "UMITO The Lounge Akasaka" free of charge.

BENEFITS 2

UMITO Owners
Concierge Service



We can also help you with travel arrangements and restaurant recommendations. Enjoy the benefits of being an owner even when you are not using UMITO.

BENEFITS 3

Regular information
exchange meetings



You can invite your friends to our social gatherings. Please take advantage of the expanding UMITO owner community.

Four benefits of choosing UMITO

☒ No need for tedious management and maintenance

UMITO handles all the property management, cleaning, and operation required for a vacation home.

UMITO can provide you with land and buildings in prime locations, utilizing its extensive knowledge and experience gained through a track record in real estate sales, buying, selling, and brokerage.

We can also handle the troublesome arrangements and management.



Rental Procedures



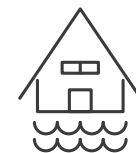
Property management



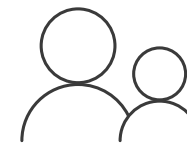
Cleaning

☒ As an employee benefit

UMITO can also be purchased under a corporate name. An account will be issued to the corporation, so it can also be used as a welfare facility. Mutual use allows you to use prime locations across the country, which increases employee satisfaction and also leads to tax savings.



UMITO



Employee use

☒ Monetize what you don't use

On days when you are not using it, you can rent it out as a hotel.

You can manage your earnings with just your smartphone.



UMITO



Lending



☒ Tax saving effect

UMITO's inheritance tax assessment value is lower than the purchase price, so it can be used as a measure against inheritance tax.

In addition, by selling it as real estate ownership or trust beneficiary rights and making it the owner's asset, you can expect tax savings.



UMITO

= Real estate assets

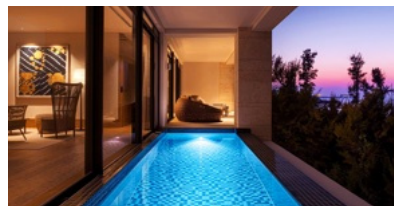
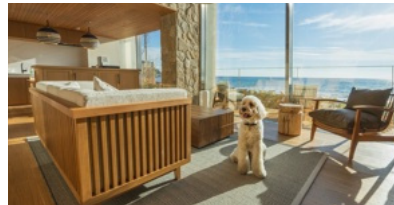
You can stay in a villa that you have purchased,
as well as a UMITO that you do not own.

Since we have mutual access to locations throughout Japan and around the world,
you can stay wherever you want, whether you're traveling or on a business trip,
and tailor your stay to suit your lifestyle.

For example, if you purchase
UMITO ATAMI THE CLIFF



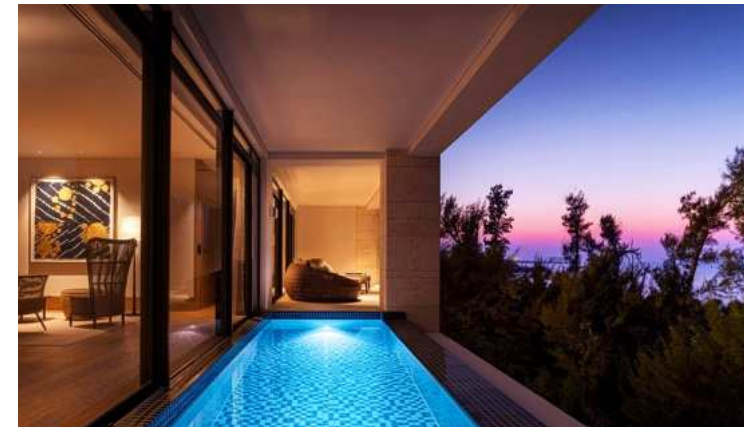
Kamakura Koshigoe, Zaimokuza,
UMITO Okinawa Onnason
and other UMITOs are
now available.



UMITO locations continue to
grow nationwide

UMITO owners can live in any UMITO
across the country through mutual use.



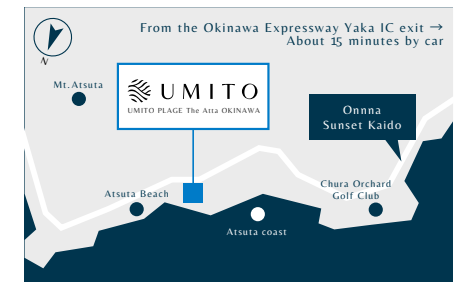


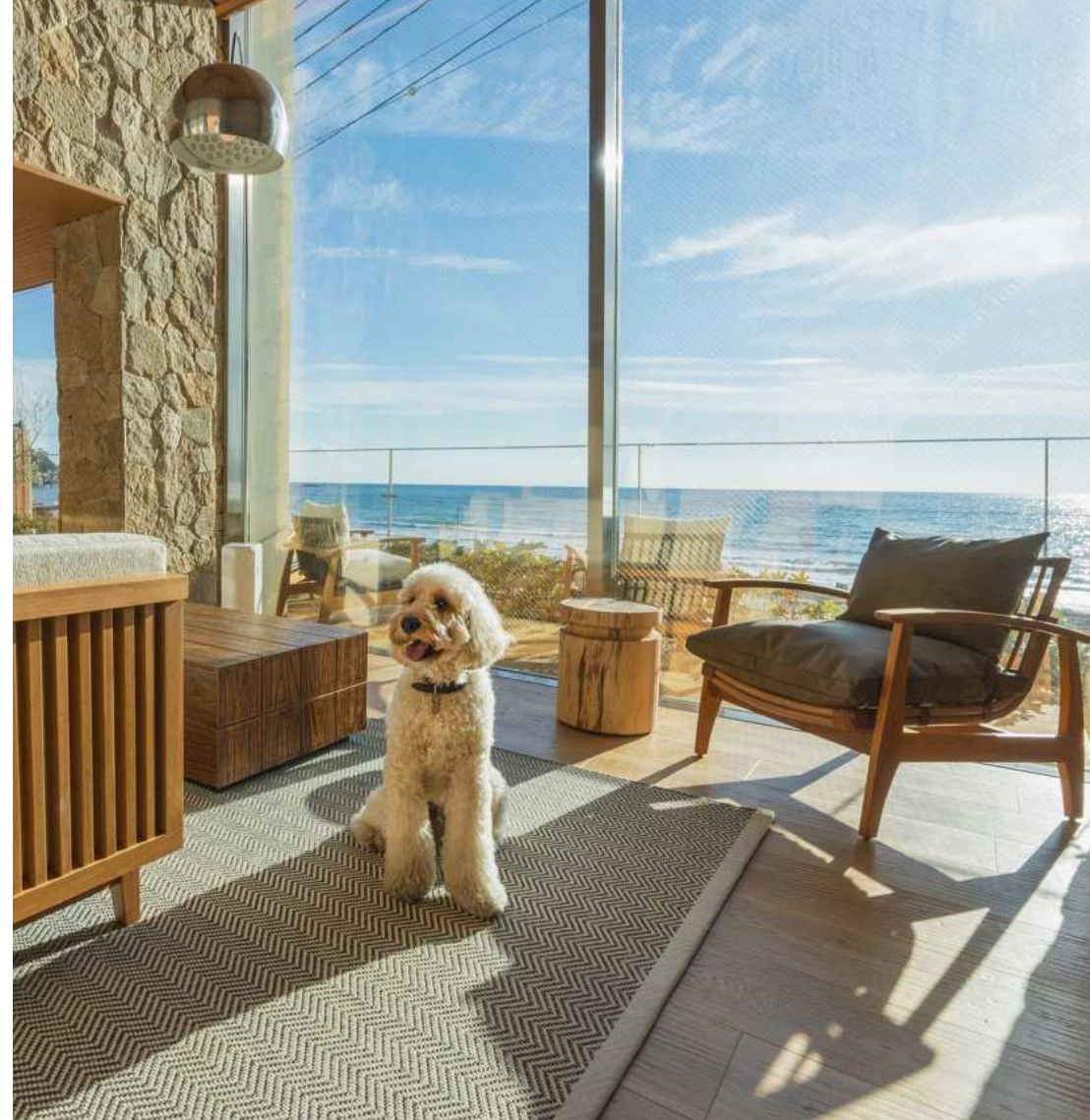
UMITO PLAGE The Atta OKINAWA

Spectacular cliff views. Unobstructed sea and greenery.

Address 1894-1 Yasufuso, Onna Village, Kunigami District, Okinawa Prefecture, 904-0402

Floor plan 3SLDK / 2LDK / 1LDK



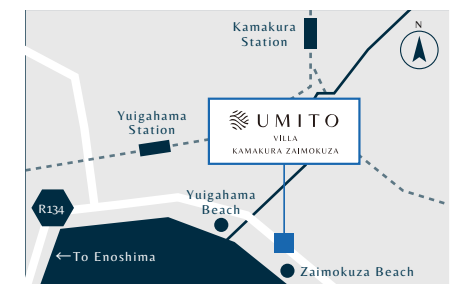


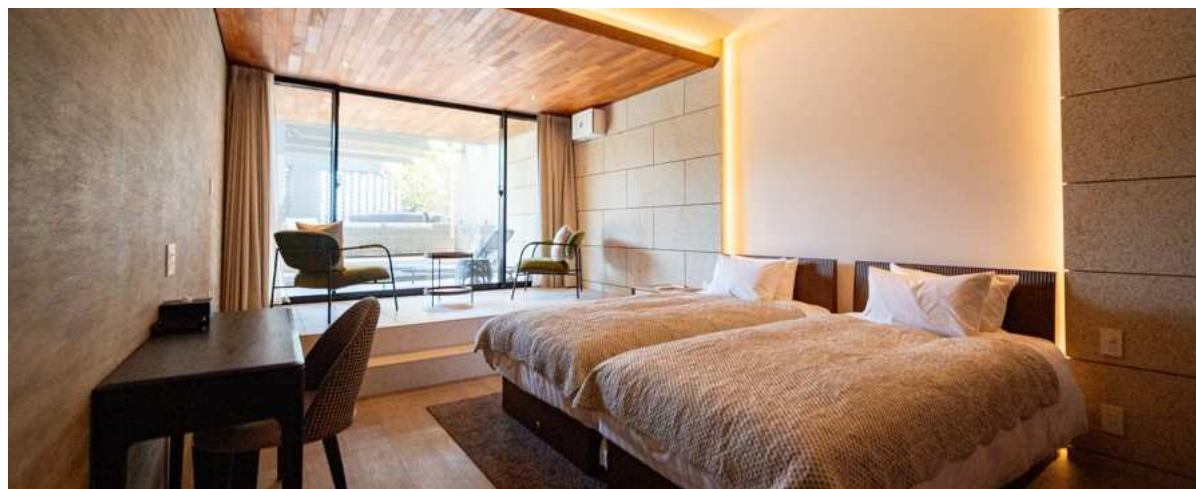
UMITO KAMAKURA ZAIMOKUZA

A house living in a special seat in Kamakura

Parcel Number 5-10-44 Zaimokuza, Kamakura City, Kanagawa Prefecture, 248-0013

Floor plan 2LDK



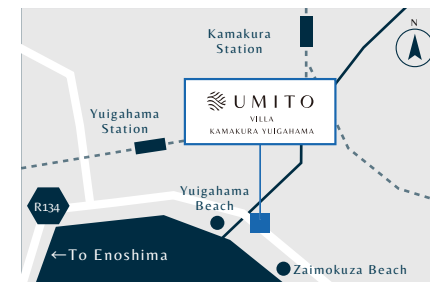


UMITO KAMAKURA YUIGAHAMA

A private residence where you can enjoy luxury

Parcel Number 5-2-19 Zaimokuza, Kamakura City, Kanagawa Prefecture, 248-0013

Floor plan 5LDK

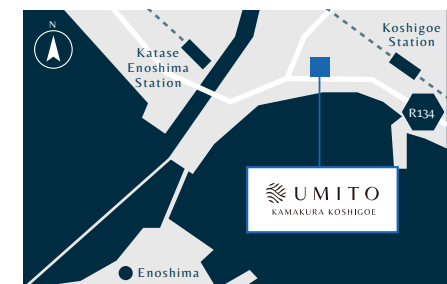




UMITO KAMAKURA KOSHIGOE

A base for daily life where everything is picturesque

Parcel Number 3-37-2 Koshigoe, Kamakura Ci , Kanagawa Prefecture
2929-16 Katase Kaigan 1chome, Fujisawa City, Kanagawa Prefecture
Floor plan 2LDK



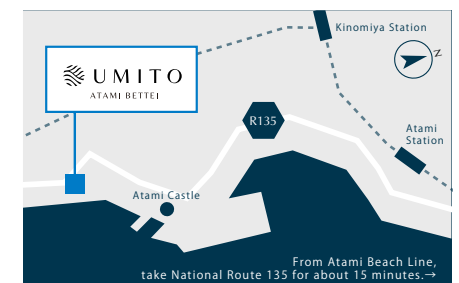


UMITO ATAMI BETTEI

Spectacular view of the cliff. Unobstructed sea and greenery.

Parcel Number 1027-78, 83 Soga, Kamitaga, Atami City, Shizuoka Prefecture

Floor plan 2LDK



WORLD SELECTION

Furthermore, UMITO will be able to be exchanged for hotels around the world beyond Japan.



The St. Regis Bora Bora Resort

Tahiti Bora Bora

<https://www.skygate.co.jp/hotel/detail?hotelCode=40119>



Emirates Palace Mandarin Oriental

Abu Dhabi, United Arab Emirates

<https://www.skygate.co.jp/hotel/detail?hotelCode=35707>



The Ritz-Carlton Maldives

Maldives Fari Islands

<https://www.skygate.co.jp/hotel/detail?hotelCode=3089249>



Six Senses Fiji

Republic of Fiji Malolo Island

<https://www.skygate.co.jp/hotel/detail?hotelCode=2138674>

UMITO will support you from consideration to after purchase.

The process is easy and can be completed online in just a few steps

1



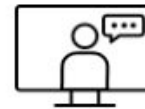
Apply online from the UMITO website.

2



The results will be announced in about a week.

3



After passing the screening, an IT explanation will be given by aspecialist staff member.

4



The contract is completed after the first payment is made.

Do you have any questions about UMITO?



You can easily ask questions and make inquiries through private chat on Whats App.



https://api.whatsapp.com/message/G07NF6WWT22701?autoload=1&app_absent=0

Consultations withspecialized staff and online interviews are available.

On-site information sessions are held regularly.

If you wish, our staff will guide you through the local surroundings. We will answer your concerns as clearly as possible



[Apply for an online interview here](#)

MESSAGE

To provide the highest level of hospitality to owners and their loved ones

Teppei Hori, the company's president and former law yer, has traveled to hotels around the world and aims to create the finest hotels that people would want to own.



Representative Director
Teppei Hori

Graduated from Chuo University Faculty of Law. Passed the bar exam in 2002.
Established MartialArts Law Firm in 2009.
Established HORIJUKU Co., Ltd. in 2019.
Representative Director of our company (current position).



Company Profile

Company Name	UMITO Co., Ltd. (Company name changed on October 1, 2024)
Representative	Representative Director: Teppei Hori (Attorney)
Location	10th floor, New Otani Garden Court, 4-1 Kioicho, Chiyoda-ku, Tokyo 102-0094
Capital	1.5 billion (including capital surplus)
Establishment	April 16, 2019
Employee	Approximately 142 employees (including temporary employees)
Permit	Small-scale real estate specific joint ventures Commissioner of the Financial Services Agency and Minister of Land, Infrastructure, Transport and Tourism (1) No. 9 Real estate trading business Governor of Tokyo (2) No. 104443 Travel business Governor of Tokyo No. 3-8554

Business details	Sales and brokerage of memberships for hotels, inns and other facilities Hotel and restaurant management Vacation home subscription service management Website production, planning, production, maintenance and management of e-mail newsletters Magazine and book sales and publishing Internet portal site planning, development, production and management Planning, operation and management of real estate investment schools Real estate buying and selling, brokerage, referral and consulting Real estate specified joint ventures
Affiliated companies	HORIJUKU Agency Co., Ltd. HORIJUKU Hospitality Co., Ltd.